



DATA SHEET

PREDATOR

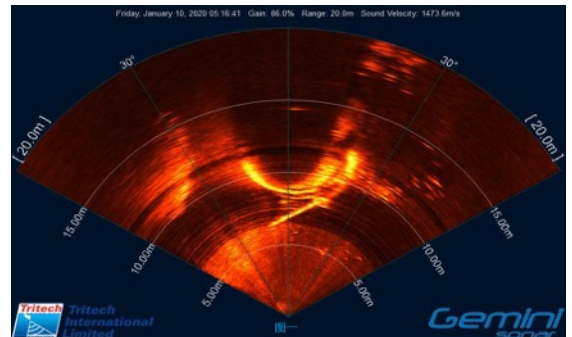
OVERVIEW

The Predator, a 300m depth-rated inspection class ROV, is developed to meet the demanding markets for rugged and reliable underwater viewing systems. The ROV features a color-zoom camera and Tritech sonar, which is widely utilized in subsea inspection, research and survey work.

In early 2020, SBSS employed Predator in Dongtai windfarm to conduct the successful subsea inspection of two monopile foundations and J-tube conditions. This is the first time that ROV technology had been utilized in the Chinese offshore wind O&M sector.

MAIN DATA

Length	900mm
Width	620mm
Height	450mm
Weight	65kg
Depth rating	300m (Standard) 1000m (Optional)
Payload	10kg approximately
Forward speed	3 knots in 0 knots current
Turning rate	120 degree / second
Tether	14mm diameter multi-core 450m in length
Power requirement	3kw @ 440v DC
Camera	2 cameras for simultaneous operation
Sonar	Tritech Gemini sonar



Luneng Dongtai offshore windfarm (2020)



Khafji Joint Operations (2012)

All performance figures quoted are nominal, actual performance is dependent on environmental conditions prevailing at the time of operations.